

Face The Patient Desk



Right Hand Configuration

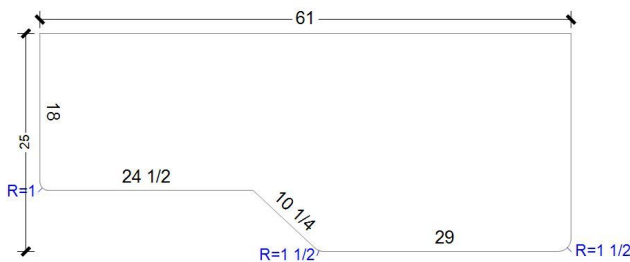
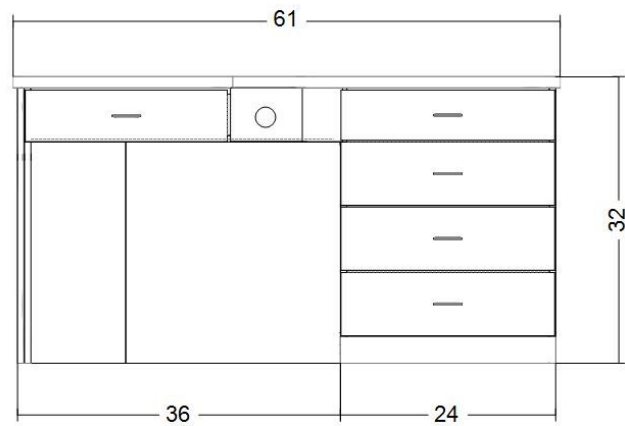
Standard Features:

- ¾" Plywood Cabinet Material
- 3" Amerock Brushed Chrome Wire Pulls
- Full Laminate Countertop
- Heavy-Duty Blum Metabox Drawers
- Tissue Dispenser in center of desk

Details and Specifications:

- ❑ Desk Measurements:
61 L x 32 H x 25 D
- ❑ Available in Right Handed *(Shown in picture) or Left Handed Configurations.
- ❑ Standard Formica Laminate Colors include:
 - White 949-58 Matte
 - Grey-stone 464-58 Matte
 - Natural Oak 346-58 Matte
 - Black Oak 3485-58 Matte
 - ****NEW****Bleached Legno 8845-58 Matte
 - ****NEW****Storm 912-58 Matte
 - Wild Cherry 5904-43 Artisan Finish

- ❑ Specialty WILSONART or FORMICA Laminate Upgrade Available



Desktop Shape & Dimensions

Optional Features:

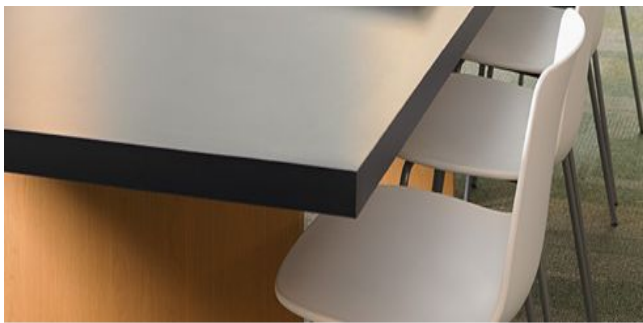
- ❑ Desktop mounted Console to accommodate electronics



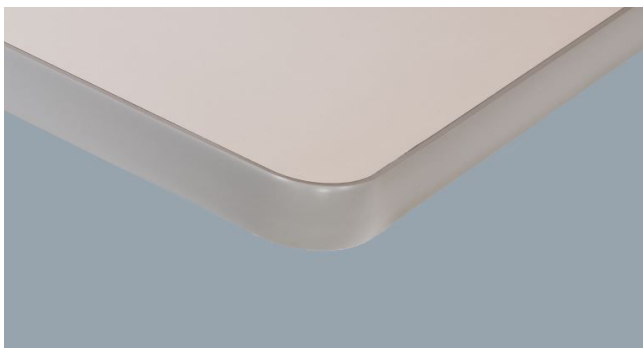
- ❑ Drawer Locks:-Keyed or Combination Style



- ❑ FORMICA Infiniti Antimicrobial Laminate top Upgrade



- ❑ PVC T-Molding around Desktop edge



- ❑ 3" RIVA Pull Hardware Upgrade *Available in Satin Nickel or Graphite.

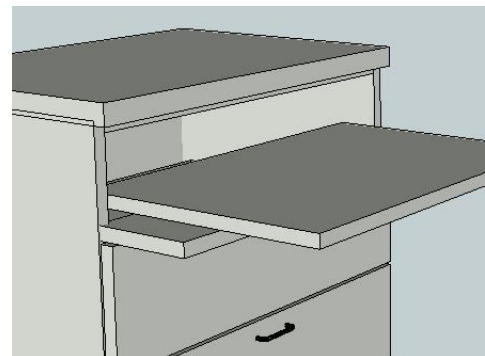


Satin Nickel



Graphite

- ❑ RollOut Tray in top right drawer to accommodate Digital Phorofter Controller



Optional Features:

- Pop-Up Trial Lense Tray *(Fits in Top drawer of drawer bank)



- Desktop mounted Single Monitor arm



- Desktop mounted Double Monitor arm

