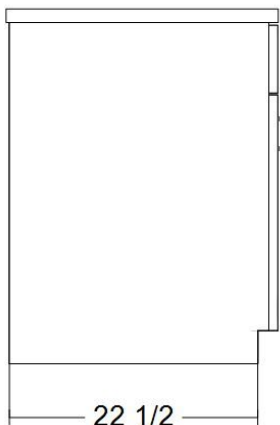
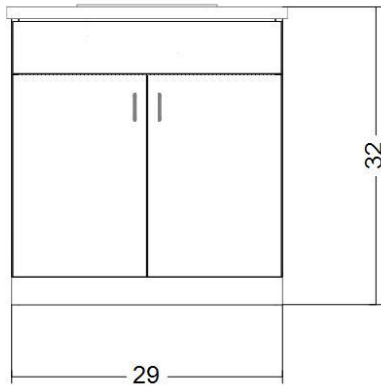


Omega & Encore Sink Cabinet



Sink Cabinet Shape & Dimensions

Standard Features:

- 3/4" Plywood Cabinet Material
- 3" Amerock Brushed Nickel Wire Pull
- Full Laminate Countertop
- Elkay Stainless Steel Drop-In Sink, Faucet, and Basket Strainer included

Details and Specifications:

❑ Sink Cabinet Measurements:

29 W x 32 H x 23 1/2 D

❑ Standard Formica Laminate Colors include:

- White 949-58 Matte
- Grey-stone 464-58 Matte
- Natural Oak 346-58 Matte
- Black Oak 3485-58 Matte
- ****NEW**** Bleached Legno 8845-58 Matte
- ****NEW**** Storm 912-58 Matte
- Wild Cherry 5904-43 Artisan Finish

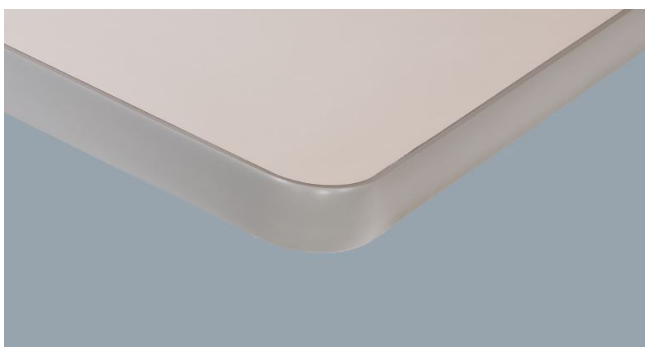
❑ Specialty WILSONART or FORMICA Laminate Upgrade Available

Optional Features:

- ❑ FORMICA Infiniti Antimicrobial Laminate top Upgrade



- ❑ PVC T-Molding around Sink top edge



- ❑ Door Locks:-Keyed or Combination Style



- ❑ 3" RIVA Pull Hardware Upgrade *Available in Satin Nickel or Graphite.



Satin Nickel



Graphite

- ❑ Aluminum C-Pull Hardware Upgrade

